

Pre owned Pemberton Montreaux 39ft x 12ft - 2 bed

£39,950



FIR TREES

CARAVAN & LODGE PARK - CHESTER



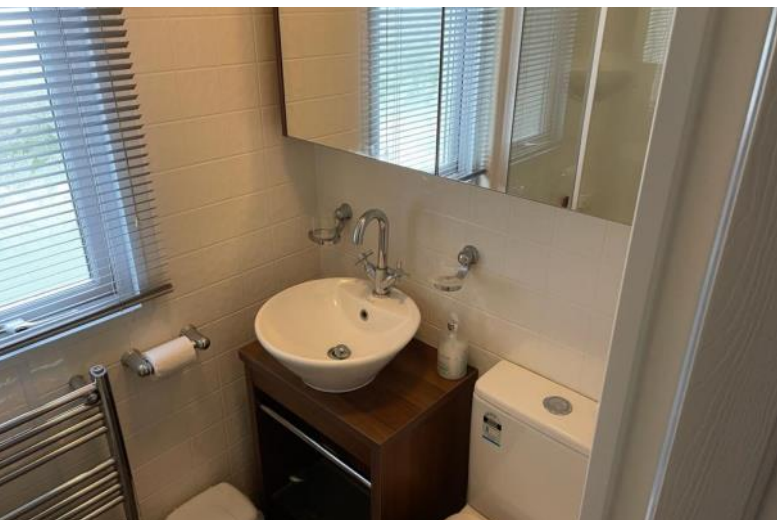
This holiday home gives you a very warm feeling as soon as you enter. In great condition, a very well looked after home from home.

The twin bedroom benefits from overhead storage and a bedside cabinet between the beds. A great starter holiday home for you and your family.

Benefits from beautiful decking.

Specification includes:

- Double glazing
- Central heating
- Vaulted ceiling throughout
- Kitchen and dining area
- Free standing dining table and chairs
- Fully fitted kitchen with lots of cupboard and storage space
- Granite effect worktops
- Dividing door to hallway
- Fridge freezer
- Oven and Grill (two door) and hob
- Lounge
- Good size room with windows going across width of caravan
- Master Bedroom
- Good size main bedroom with en-suite WC
- Vanity mirror
- Storage cupboards above bed
- Mirrored built in wardrobes
- Twin bedroom
- Family bathroom with Shower



Fir Trees Caravan and Lodge Park. Ferry Lane, Chester, Cheshire CH1 6QF 01244 398 365

www.firtreescaravanpark.com