

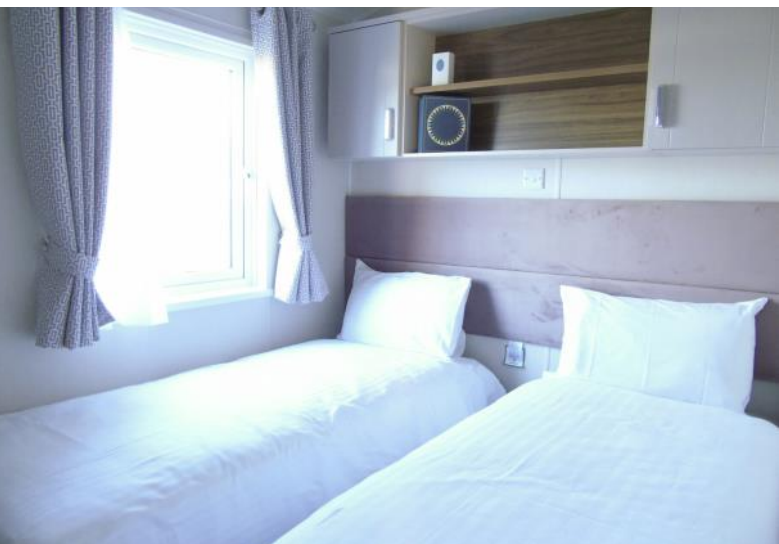
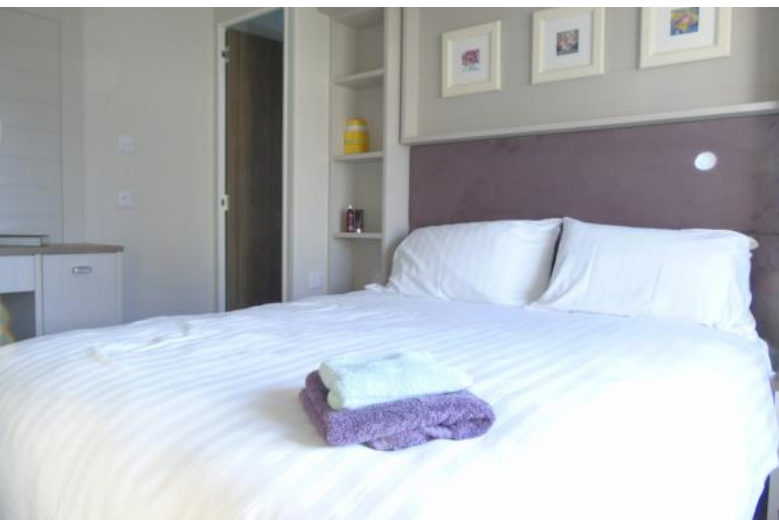
2022 Willerby Sheraton 40ft x 13ft - 2 bed Static Caravan Holiday Home

£84,995



# FIR TREES

CARAVAN & LODGE PARK - CHESTER



The Sheraton is sure to impress those who are in search of an ideal escape. Jump straight into the countryside with the Sheraton's heritage inspired lounge and wood effect feature fireplace. Feel snug all year round cuddling up on the matching twin sofas with hints of rustic prints over the cushions and curtains.

Specification includes:

- Aluminium cladding
- Energy efficient PVCu double glazed windows and doors
- Fully galvanised chassis
- Central heating system featuring high-efficiency condensing combi boiler
- Integritas Wall System™
- Brushed chrome sockets and USB outlets
- Two freestanding two-seater sofas with fold-out bed
- Scatter cushions
- Wood burner effect electric fire
- Coffee table
- TV unit and TV point
- Integrated microwave
- Integrated 70/30 fridge-freezer
- Gas oven/grill with 4 burner hob and glass splashback
- Extractor fan
- Freestanding dining table and upholstered dining chairs
- Welsh dresser
- En Suite – One piece fibreglass shower enclosure with thermostatically controlled shower
- Family Shower Room – One piece fibreglass shower enclosure with thermostatically controlled shower
- Circular wash basin mounted on vanity unit
- Chrome towel rail
- Shaver socket
- King-size bed with lift-up storage system and upholstered headboard
- Bedside cabinets
- Walk-in wardrobe
- Dressing table with mirror and stool
- Ensuite shower room
- Single beds with upholstered headboards in twin bedroom